



www.krsm.in

Leasing | Interior





KRSM GLOBAL CORPORATE SERVICES PVT. LTD

Corporate Leasing & Interior Company with more than 10 Years of experience.

We specialize in corporate leasing and interior solutions that align business strategy with inspired design. Our approach combines deep industry expertise with sustainable, human-centric environments-tailored to boost productivity, innovation, and well-being. From securing the right space to designing impactful workplaces, we're your trusted partner in shaping the future of work.



WHO WE ARE AND WHAT WE DO

KRSM GLOBAL Corporate Services PVT. LTD. also known as **KRSM GLOBAL** is one of the leading companies in corporate leasing and interior designsince 2000

We do set of things that makes a corporate's life simple & functional and create an environment that is well managed for them to focus on their core competencies.

We at **KRSM Global** carry a vast experience of serving the requirements of various kind of Companies – **MNCs, Small & Medium Size Enterprises, Start-ups, New Market Entrants**, etc.

At **KRSM Global**, we offer **turnkey solutions** – handling everything from **leasing** to **interior design**, So you get a fully ready-to-use space without the hassle.



OUR SERVICES

- **Corporate Leasing**
 - Residential Leasing
 - Commercial Leasing
 - Industrial Leasing
- **Corporate Interior**
 - Turnkey Interior Solutions
 - Modification/Renovation Solution
 - Civil : Design and Build Services



CORPORATE LEASING

KRSM Global specializes in corporate leasing solutions across commercial, industrial, and residential sectors—delivering customized strategies tailored to your unique business needs.



Residential Leasing



Commercial Leasing



Industrial Leasing



CORPORATE INTERIOR

We craft corporate interiors that feel as good as they look—spaces that work beautifully for your team and your brand



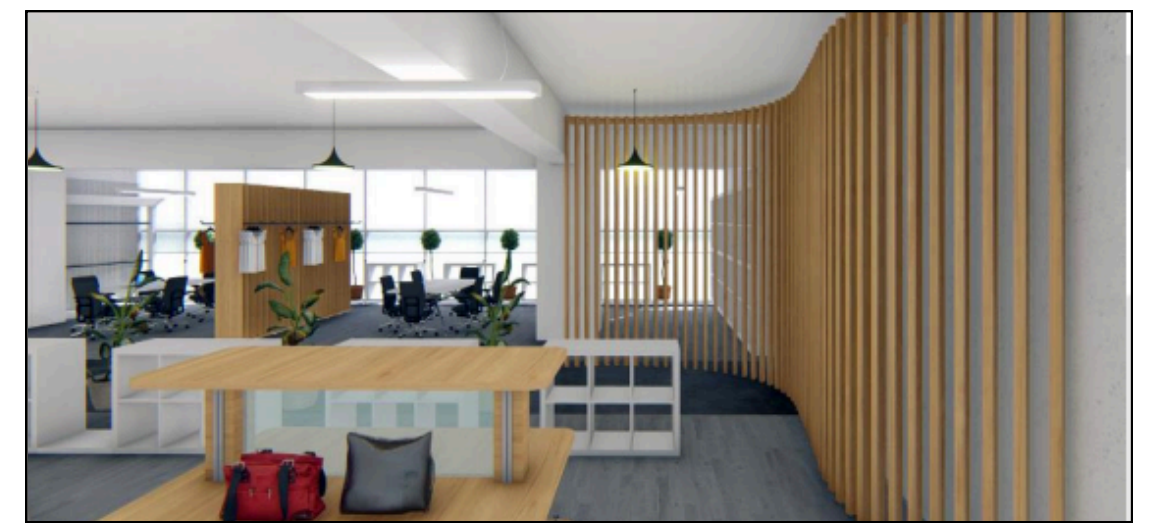
Turnkey Solutions



Renovation Solutions



Design & Build Solutions



OUR VALUED

Clients





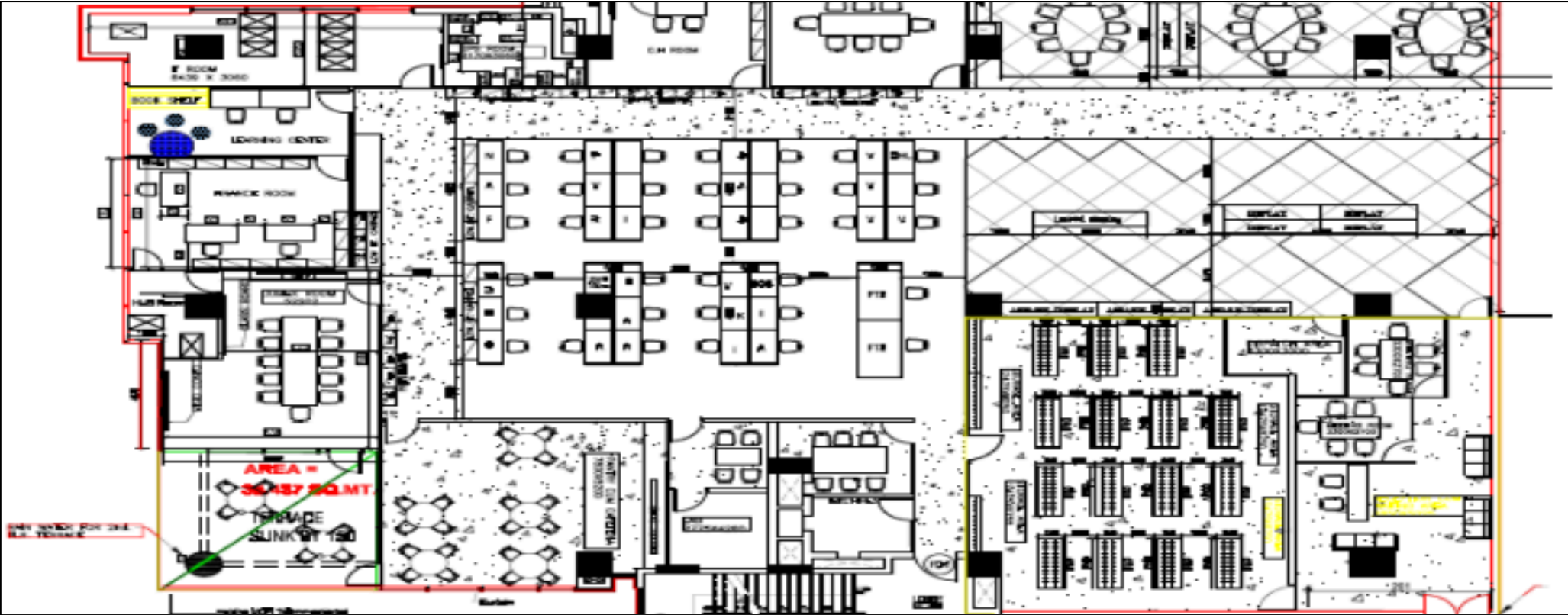
Rödl & Partner





OUR FINISHED

Projects



CLIENT: Carrefour
AREA: 16,000 sq. ft (single floor)
LOCATION: BPTP PARK Centra, Gurugram
WORK SCOPE: Turnkey & Interior



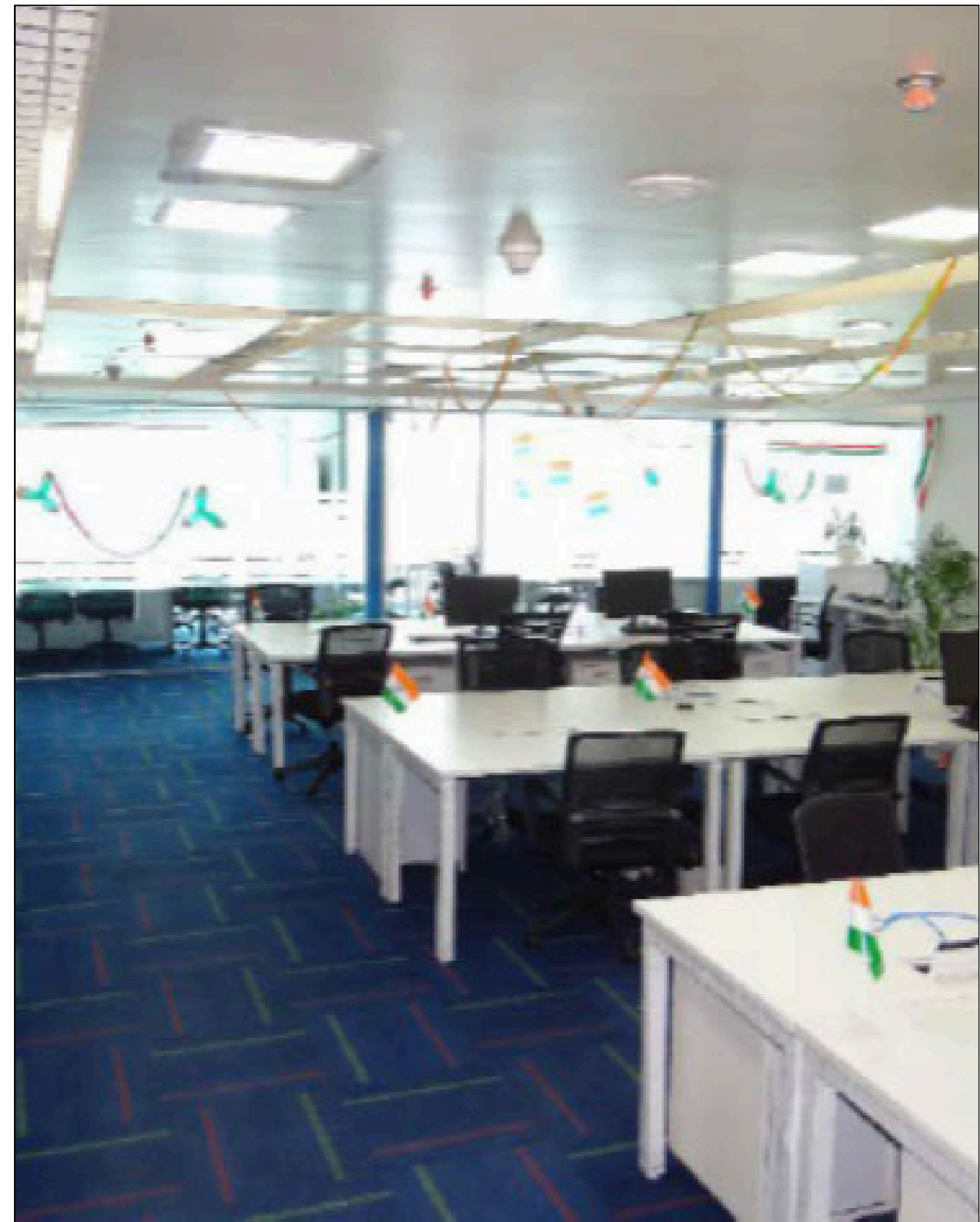


CLIENT: Neoris – A Mexican MNC

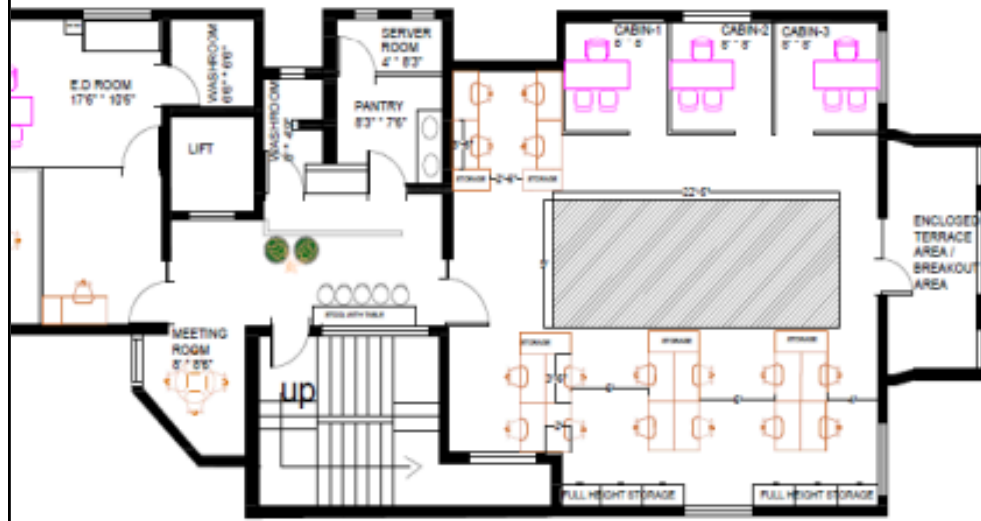
AREA: 8,500 sq. ft (single floor)

LOCATION: Golf Course Road, Gurugram

WORK SCOPE: Renovation/Modification



2nd Floor



3rd Floor



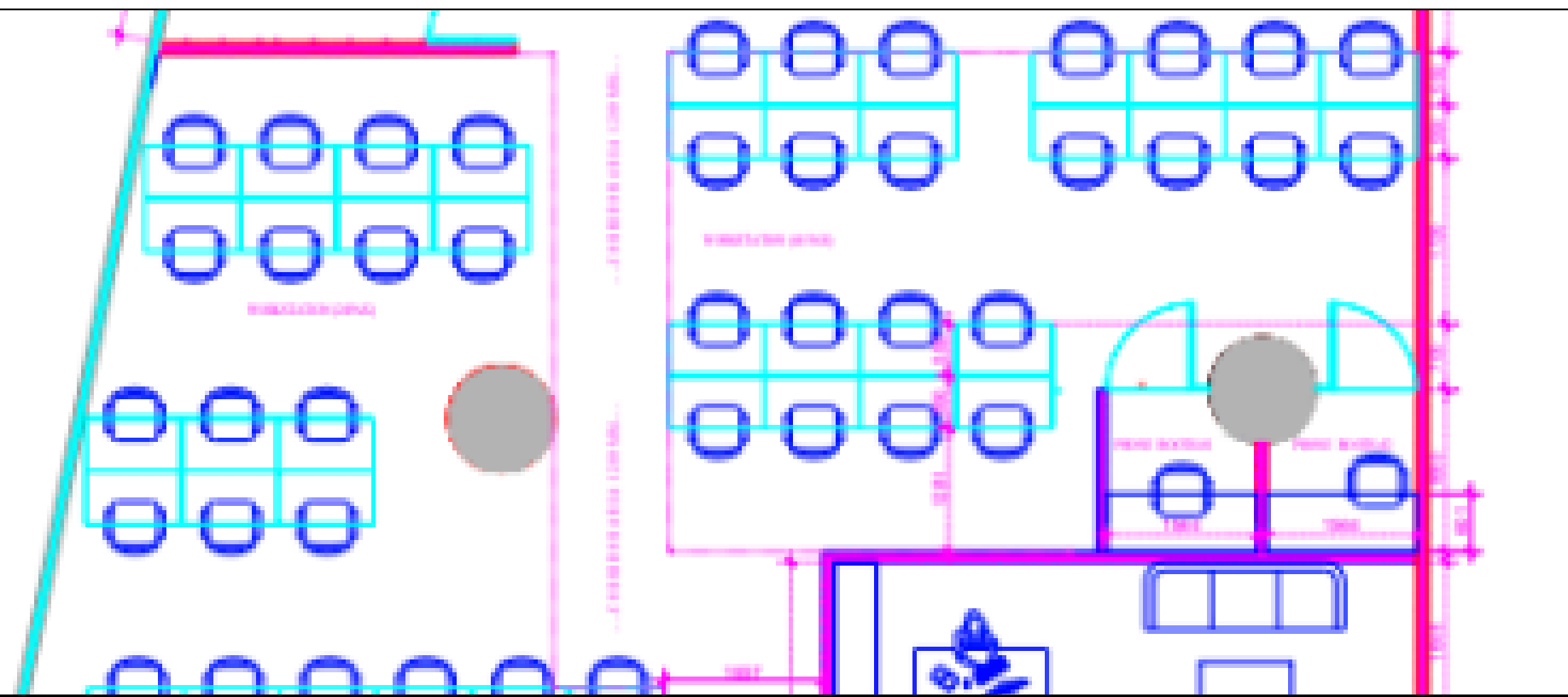
CLIENT: Center for Catalyzing Change

AREA: 5,500 sq. ft (two floor)

LOCATION: Qutub Institutional Area, New Delhi

WORK SCOPE: Turnkey



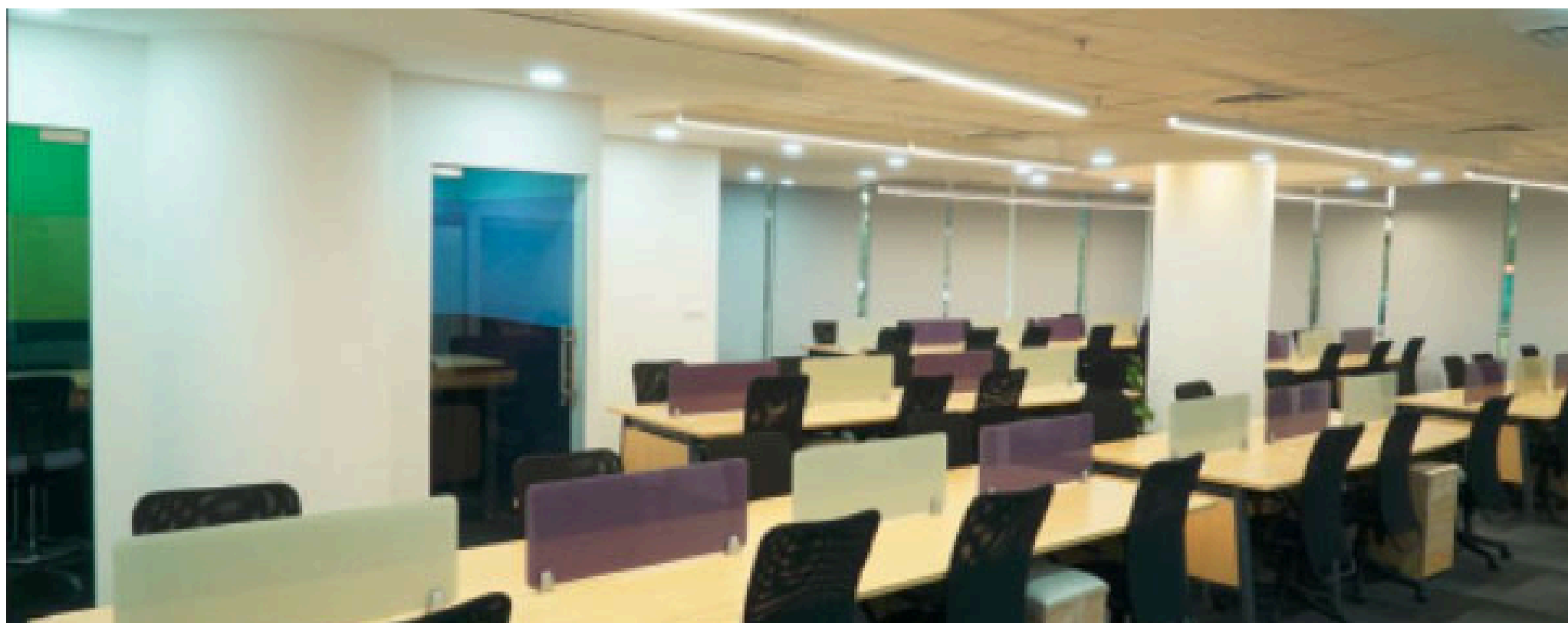


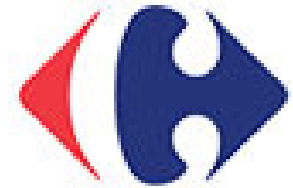
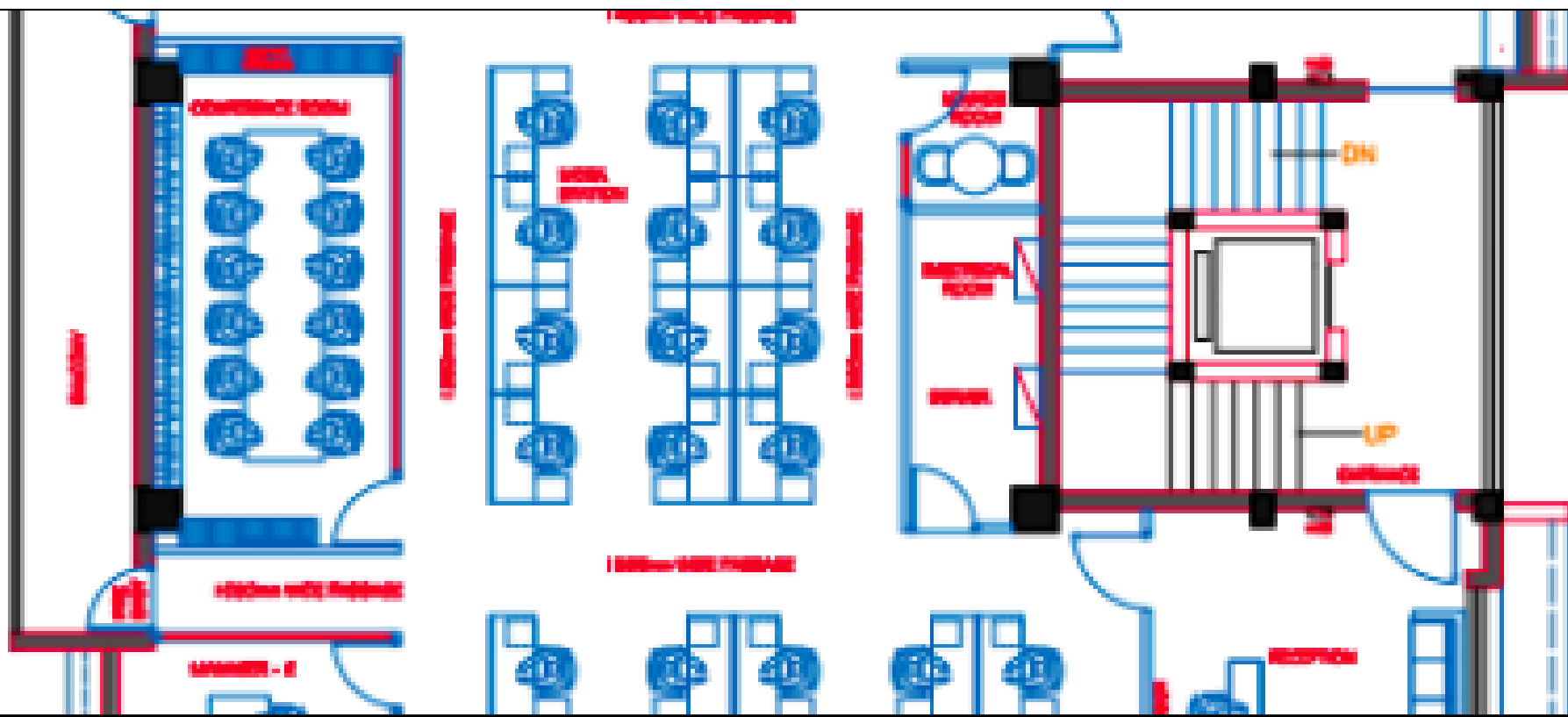
CLIENT: Visit Health

AREA: 3,250 sq. ft (two floor)

LOCATION: Ground Floor, MG Road, Gurugram

WORK SCOPE: Turnkey





Carrefour

CLIENT: Carrefour

AREA: 4,500 sq. ft (single floor)

LOCATION: 1st Floor, NTower, Coimbatore

WORK SCOPE: Turnkey





AREA: 33,400 sq ft
WORK SCOPE: Turnkey
No. of Days: 60
LOCATION: Bestech Tower, Sector-48, Sohna Road





REACH OUT

Today

+91 9810 22 9026
info@krsm.in

www.krsm.in

5th Level, Tower C, DLF Cyber Greens,
Cyber City, Gurugram-122002,
India,

